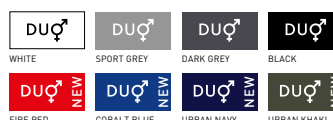


# B&C Inspire Plus T /women - TW 049



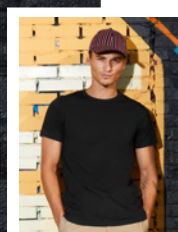
**MEDIUM FIT**

Your new favourite heavyweight T-shirt in 100% organic combed ring-spun cotton with a perfect fit and a very soft handfeel at an affordable price. "B&C No Label" solution for easy rebranding.



### Organic Cotton

- 100% organic combed ring-spun cotton  
SPORT GREY: 90% ORGANIC COMBED RING-SPUN COTTON/10% VISCOSE
- Single Jersey
- 175 g/m<sup>2</sup>
- XS - S - M - L - XL - 2XL
- 10 pcs/pack & 50 pcs/carton



**DUO CONCEPT**

with B&C Inspire Plus T /m.

**You like the B&C Inspire Plus T /women but want another weight?**

TRY THE B&C INSPIRE T /WOMEN - same style but in a lighter fabric

### Cut / Fit

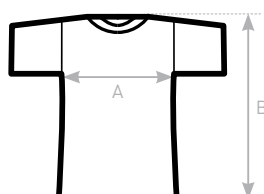
- Stripped back to the essentials, this heavy T-shirt is clean and minimalistic for any occasion
- Comfortable body length construction for a perfect retail look
- Side seams ensure the best fit and a feminine silhouette
- Cut in an easy, medium fit
- Thin collar rib for modern, up to date appearance
- For long-lasting comfort, the back neck is reinforced with a soft self tape
- Minimalist cut and detailing suitable for many uses and any end user requirement

### Quality / Handfeel

- The B&C Inspire Plus T /women is made of heavy combed organic soft jersey with a luxurious handfeel and long-wearing comfort.
- Extra soft and smooth handfeel thanks to the ring-spun cotton
- Combed yarn ensures finer, smoother, stronger, more compact, more uniform and cleaner fabric
- Comfortable and pleasant to wear thanks to the organic thin yarn and dense fabric construction

### Printability / Decoration

- Very smooth and even surface allows bright and crisp printing results
- "B&C No Label" system for perfect rebranding
- Tested and approved for all standard printing techniques applicable on cotton
- Folded in box to ease the decoration process



### SIZES [CM]

B&C INSPIRE PLUS T /WOMEN TW 049	XS	S	M	L	XL	2XL	3XL
A HALF CHEST	43,5	46,5	49,5	52,5	55,5	58,5	-
B BODY LENGTH FROM NECK POINT	60	62	64	66	68	70	-

