

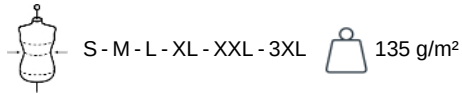
KARIBAN  
PREMIUM

PK602

## Men's structured trenchcoat

- Suit collar for a smart, classy look.
- Premium quality trench coat.

100% polyester. 3 bonded layers. Waterproof fabric 8,000 mm. Inner Thinsulate® padding. Wind breaker. Tailored collar with contrasting felt collar inner. Metal button fastening at the front. Metal buttons at cuffs. 2 flap pockets at the front and 1 piped pocket on the right. Inside zipped pocket on left. Back hem slit with press stud. Hanging loop at neckline. Inner personalisation zip at rear hem and left-hand side. Personalisation patch at top of back. No brand label, only size tag for easy decoration access.



### More information

#### Logistic



1



10

#### Country of origin



CN - China

#### Customs code



62014010



Black

Deep  
Navy

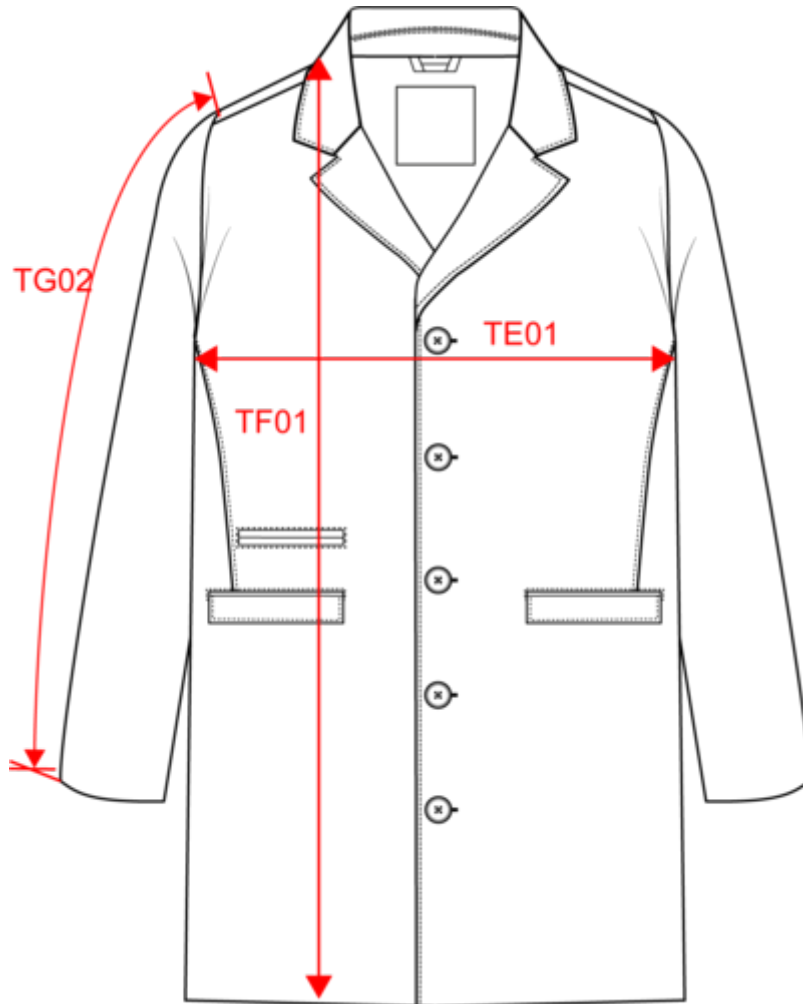


KARIBAN  
PREMIUM

PK602

Men's structured trenchcoat

Dimensions (cm)



Measurements in cm	S	M	L	XL	XXL	3XL
TE01 - 1/2 chest width at 1.5cm below armhole	54.50	57.50	60.50	63.50	66.50	69.50
TF01 - Total height from HSP	91.00	93.00	95.00	97.00	99.00	101.00
TG02 - Long sleeve length	66.00	67.00	68.00	69.00	70.00	71.00

KARIBAN  
PREMIUM

PK602

Men's structured trenchcoat

Colours information



**Black**  
RVB : 35,35,37  
Pantone C : Black  
Pantone TCX : 19-4004TCX



**Deep Navy**  
RVB : 34,35,47  
Pantone C : 532C  
Pantone TCX : 19-3924TCX

Logistic



1



10

Sizes	Width (cm)	Height (cm)	Length (cm)	Net weight (kg)	Gross weight (kg)	Pieces/Box	Pieces/Bundle
S	40.00000	30.00000	60.00000	10.25000	8.75000	10	1
M	40.00000	30.00000	60.00000	10.50000	9.00000	10	1
L	40.00000	35.00000	60.00000	10.85000	9.35000	10	1
XL	40.00000	35.00000	60.00000	11.00000	9.50000	10	1
XXL	40.00000	35.00000	60.00000	11.15000	9.65000	10	1
3XL	40.00000	35.00000	60.00000	11.25000	9.75000	10	1