

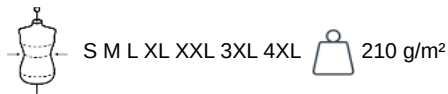
KARIBAN PREMIUM

PK902

Men Supima® cardigan

- Extra-long fibre Supima® cotton for a silky texture.
- Machine washable for easy care.
- Straight fit for a chic, understated style.

100% cotton Supima®. Combed cotton. Gauge 12. Superior quality fabric. Fully-fashioned: knitted in shape and assembled on a knitting machine. Neckline, wrist cords and hem, 1x1 rib. Buttonhole with plastic buttons. Matching. Average weight size L : 322g.



More information

Logistic



5



20

Country of origin



BD - Bangladesh

Customs code



61102091

Also available in version



PK903

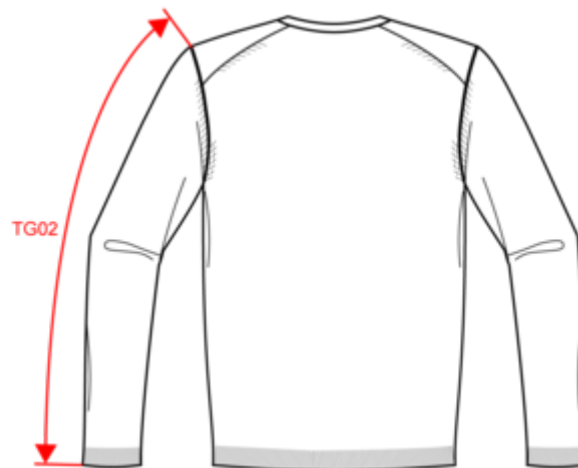
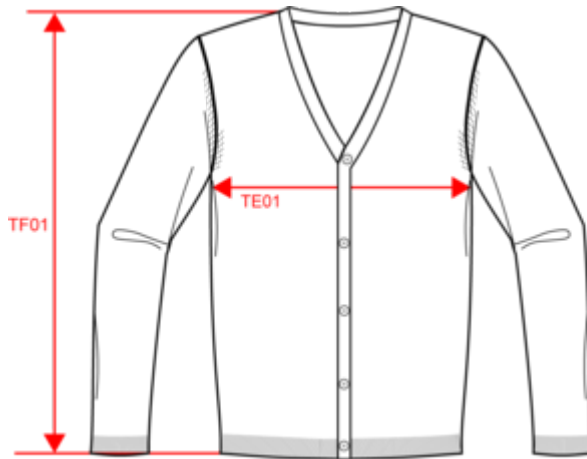


KARIBAN
PREMIUM

PK902

Men Supima® cardigan

Dimensions (cm)



Measurements in cm	S	M	L	XL	XXL	3XL	4XL
TE01 - 1/2 chest width at 1.5cm below armhole	50.00	53.00	56.00	59.00	62.00	65.00	68.00
TF01 - Total height from HSP	69.00	71.00	73.00	75.00	77.00	79.00	81.00
TG02 - Long sleeve length	64.00	65.00	66.00	67.00	68.00	69.00	70.00

KARIBAN PREMIUM

PK902

Men Supima® cardigan

Colours information



Black

RVB : 35,35,37
Pantone C : Black
Pantone TCX : 19-4004TCX



Deep Navy

RVB : 34,35,47
Pantone C : 532C
Pantone TCX : 19-3924TCX



Grey Heather

RVB :
Pantone C : Based on 417C
Pantone TCX : Based on 18-5203TCX

Logistic



5



20

Sizes	Width (cm)	Height (cm)	Length (cm)	Net weight (kg)	Gross weight (kg)	Pieces/Box	Pieces/Bundle
S	40.00	17.00	60.00	5.60000	7.10000	20	5
M	40.00	17.00	60.00	5.90000	7.40000	20	5
L	40.00	17.00	60.00	6.30000	7.80000	20	5
XL	40.00	17.00	60.00	6.50000	8.00000	20	5
XXL	40.00	19.00	60.00	7.10000	8.30000	20	5
3XL	40.00	19.00	60.00	7.40000	8.90000	20	5
4XL	40.00	19.00	60.00	7.90000	9.90000	20	5