

NS202

Men's long sleeve linen polo shirt




About

- Linen is a sustainable, thermoregulating and lightweight fabric.
- No label for limitless customisation.
- Slim fit.

100% linen. Knit. Slim fit. Half-circle in the back. V-shaped buttonless placket and collar in main material. Twin needle finish at cuffs and hem. Side slits with inner taped neck finish in main material.

 190 g/m² 

Sizes

 S - M - L - XL - XXL - 3XL

More information

Logistic

Country of origin

Customs code

 10

 40



BD - Bangladesh



61059090

Washing instructions



Colours

 Navy Blue

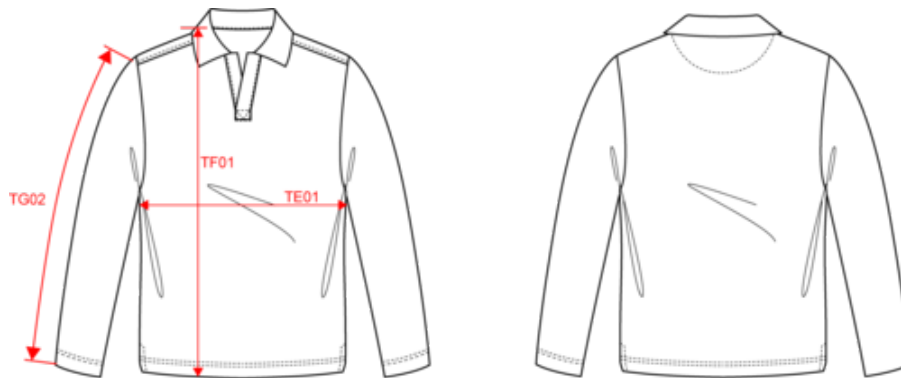
 Wet Sand

Certifications



NS202
Men's long sleeve linen polo shirt


Dimensions (cm)




Measurements in cm	S	M	L	XL	XXL	3XL
TE01 - 1/2 chest width at 1.5cm below armhole	49.00	52.00	55.00	58.00	61.00	64.00
TF01 - Total height from HSP	68.00	70.00	72.00	74.00	76.00	78.00
TG02 - Long sleeve length	62.00	63.00	64.00	65.00	66.00	67.00

NS202
Men's long sleeve linen polo shirt

Colours information

 **Navy Blue**
RVB : 41,45,57
Pantone C : 433C
Pantone TCX : 19-4010TCX

 **Wet Sand**
RVB : 164,146,128
Pantone C : 7536C
Pantone TCX : 17-1312TCX

Logistic  10  40

Sizes	Width (cm)	Height (cm)	Length (cm)	Net weight (kg)	Gross weight (kg)	Pieces/Box	Pieces/Bundle
S	40.00	20.00	60.00	0.00000	0.00000	40	10
M	40.00	20.00	60.00	0.00000	0.00000	40	10
L	40.00	20.00	60.00	0.00000	0.00000	40	10
XL	40.00	20.00	60.00	0.00000	0.00000	40	10
XXL	40.00	20.00	60.00	0.00000	0.00000	40	10
3XL	40.00	20.00	60.00	0.00000	0.00000	40	10