


NS900
Long-sleeved jumper



100% organic cotton Combed cotton 14 gauge Straight fit Raw edging on neckline and cuffs

 160 g/m² 

Sizes

 S - M - L - XL - XXL - 3XL

More information

Logistic

 5  40

Country of origin

 BD - Bangladesh

Customs code

 61102099

Washing instructions



Colours

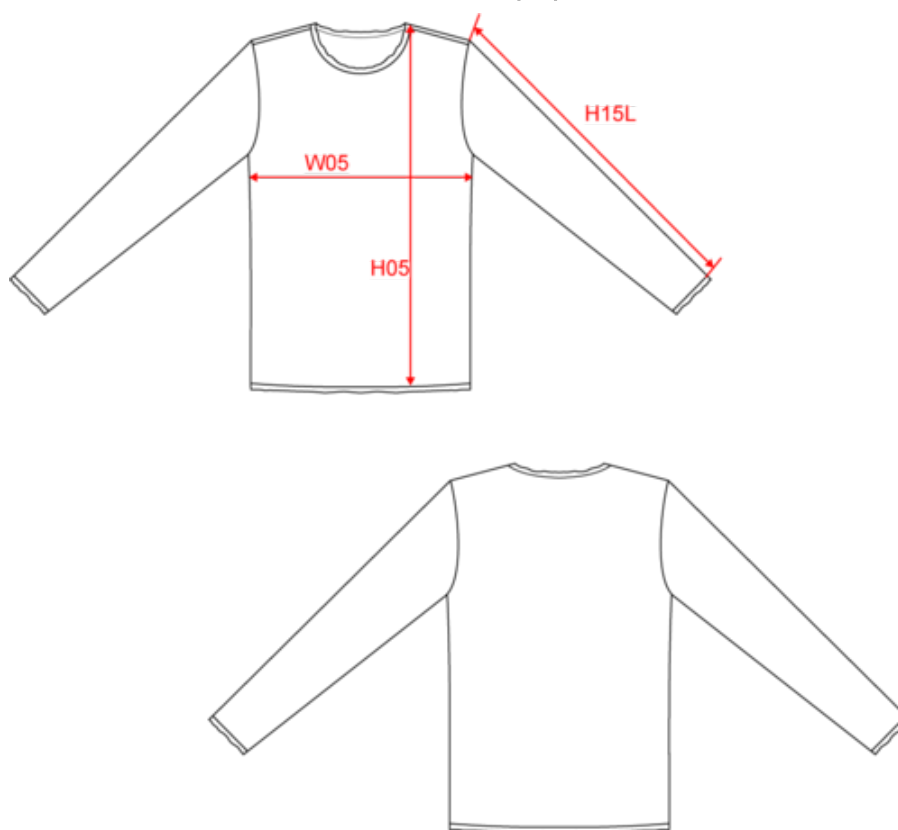
 Moon Grey Heather
 Navy Blue
 Wet Sand

Certifications



NS900
Long-sleeved jumper

Dimensions (cm)



Measurements in cm	S	M	L	XL	XXL	3XL
H05 (M) - Total height	70.00	72.00	74.00	76.00	78.00	80.00
H15L (M) - Long sleeve length	62.50	63.50	64.50	65.50	66.50	67.50
W05 (M) - 1/2 chest width at 1.5cm below armhole	49.00	52.00	55.00	58.00	61.00	64.00

NS900

Long-sleeved jumper

Colours information

Moon Grey Heather

RVB :
Pantone C : Based on 7539C
Pantone TCX : Based on 16-5101TCX

Navy Blue

RVB : 41,45,57
Pantone C : 433C
Pantone TCX : 19-4010TCX

Wet Sand

RVB : 164,146,128
Pantone C : 7536C
Pantone TCX : 17-1312TCX

Logistic



5



40

Sizes	Width (cm)	Height (cm)	Length (cm)	Net weight (kg)	Gross weight (kg)	Pieces/Box	Pieces/Bundle
S	40	24	60			40	5
M	40	24	60			40	5
L	40	24	60			40	5
XL	40	26	60			40	5
XXL	40	26	60			40	5
3XL	40	26	60			40	5