




**About**

- Contains merino wool, a noble material.
- Fashionable "balloon" sleeves.
- Regular fit.

50% organic cotton and 50% RWS\* responsible Merino wool 5 gauge  
Regular fit and "balloon" sleeves 1x1 rib neckline, cuffs and bottom  
hem "Fully Fashion" knit \*Responsible Wool Standard

 620 g/m<sup>2</sup> 

**Sizes**


 XS - S - M - L - XL

**More information**

**Logistic**

 5  10

**Country of origin**

 BD - Bangladesh



**Customs code**

 61102099

**Washing instructions**



**Colours**

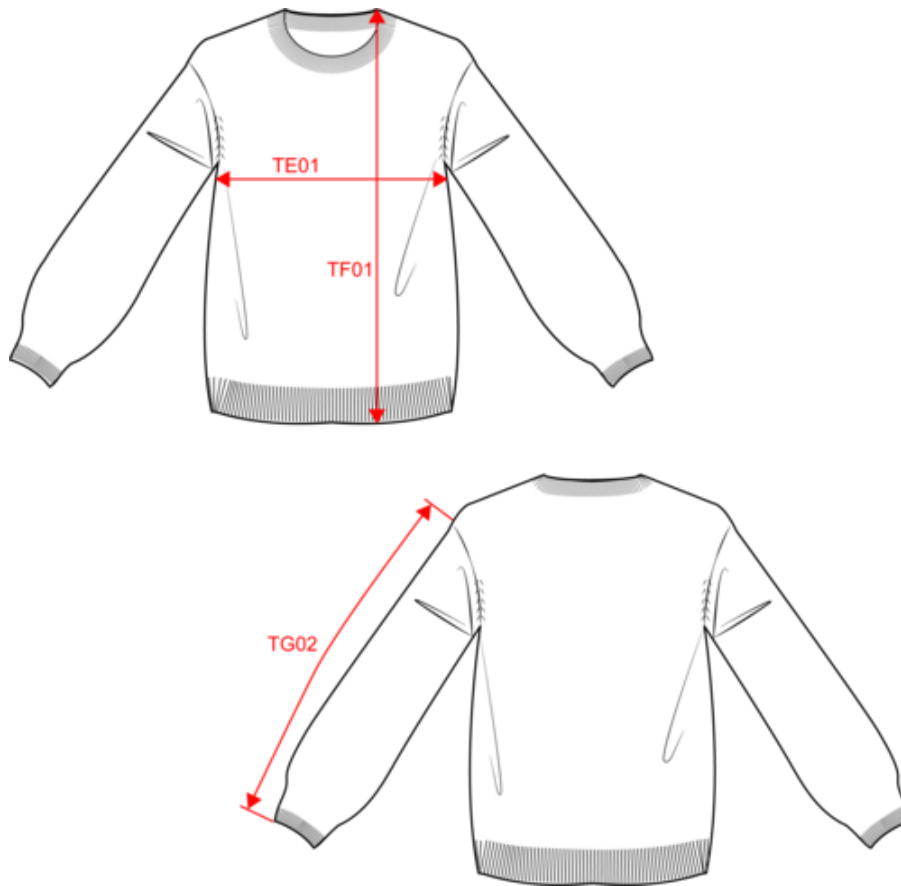
 Ivory  Navy Blue

**Certifications**



**NS920**  
Ladies' merino wool jumper


Dimensions (cm)




Measurements in cm	XS	S	M	L	XL
TE01 - 1/2 chest width at 1.5cm below armhole	50.00	53.00	56.00	59.00	62.00
TF01 - Total height from HSP	56.00	58.00	60.00	62.00	64.00
TG02 - Long sleeve length	45.00	46.00	47.00	48.00	49.00

**NS920**  
Ladies' merino wool jumper

**Colours information**

 **Ivory**  
RVB : 236,231,218  
Pantone C : 7534C  
Pantone TCX : 11-0701TCX

 **Navy Blue**  
RVB : 41,45,57  
Pantone C : 433C  
Pantone TCX : 19-4010TCX

**Logistic**



Sizes	Width (cm)	Height (cm)	Length (cm)	Net weight (kg)	Gross weight (kg)	Pieces/Box	Pieces/Bundle
XS	40.00	40.00	60.00	5.40000	7.40000	10	5
S	40.00	40.00	60.00	5.90000	7.90000	10	5
M	40.00	40.00	60.00	6.43000	8.43000	10	5
L	40.00	40.00	60.00	6.97000	8.97000	10	5
XL	40.00	40.00	60.00	7.54000	9.54000	10	5