

NEW2020

# B&C #Hoodie /women

WW04W



Contemporary all purpose Hoodie for women available in 35 amazing colours made of 80/20 soft sweat fabric providing an ideal printing surface. Your #bestallpurposehoodie #women #idealprintability



## SWEATSHIRT - FRENCH TERRY

80% pre-shrunk ring-spun Cotton - 20% Polyester  
280 g/m<sup>2</sup> | XS - S - M - L - XL - 2XL - 3XL\*  
5 pcs/pack & 20 pcs/carton

\* Only available in Black Pure, Navy Blue, Heather Grey, Asphalt, Royal, Red, White

Want the same style but in men?  
Try the B&C #Hoodie



DUO  
CONCEPT

SWEATSHIRTS | WOMEN



\* ALSO AVAILABLE IN 3XL  
HEATHER MID GREY, HEATHER NAVY, HEATHER ASPHALT, HEATHER RED, HEATHER DARK GREEN, HEATHER ROYAL BLUE & HEATHER PURPLE: 60% PRE-SHRUNK RING-SPUN COTTON - 40% POLYESTER / HEATHER GREY: 92% PRE-SHRUNK RING-SPUN COTTON - 8% VISCOSE

### #Style

- Essential classic women hooded sweatshirt, clean and minimalistic for any occasion #allpurposes
- Comfortable dedicated women fit and body length for perfect look #uptodate
- Side seams ensure the best fit and a great feminine silhouette #feminineshape
- Identical colours (35) for men and women #perfectduo
- 7 sizes - XS to 3XL #fitsall
- Easy branding solution - B&C No Label Solution #customiseme

- Inside Single Jersey halfmoon in back to allow easy branding personalisation #makemylifeeasy
- Minimalist detailing suitable for many uses and end user requirements #easystyling

### #Quality / Handfeel

- Made of 80% ring-spun Cotton / 20% Polyester #skincomfort
- #Oeko-Tex100
- Unbrushed fabric for a perfect look #myperfectlook
- Unbrushed fabric combined with a soft outside that allow great comfort #greatcomfort

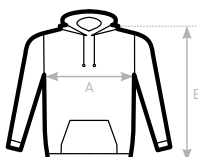
- Resistant fabric and soft handfeel #ringspun
- 280 gsm #whatevertheweather

### #Printability / Decoration

- Smooth and even surface for ideal printing results #details
- Tested and approved for all standard printing techniques applicable on Cotton/Polyester #beinspired
- B&C No Label Solution for perfect rebranding #customiseme
- Folded in box to ease the decoration process #makemylifeeasy

### Labels

- Easy branding solution - B&C No Label Solution
- Straightforward size identification through size chip on the neck
- In sideseam: Soft satin label with all mandatory information following EU regulation



B&C #HOODIE /WOMEN WW04W	XS	S	M	L	XL	2XL	3XL
A HALF CHEST	46,5	49	52	55	58	61,5	65
B BODY LENGTH	62	64	66	68	69	70	71

